

REEF LIFE SURVEY

2024/25
Annual Report



Reef Life Survey Foundation

OUR VISION

Improved knowledge & condition of reef systems

OUR MISSION

To inspire & engage a global volunteer community to survey reefs using scientific methods, & share knowledge about the marine ecosystem

RLSF 2025 ANNUAL REPORT

Copyright and Disclaimer

This report was designed and compiled by Joanna Schmid, Antonia Cooper, and Ella Clausius.
Photos by Rick Stuart-Smith & Antonia Cooper

The Reef Life Survey Foundation is a non-profit environmental organisation. Donations to the RLSF are tax-deductible and support ongoing monitoring of the marine environment around Australia.

www.reeflifesurvey.com

©2025RLSF

To the extent permitted by law, all rights are reserved and no part of this publication covered by copyright may be reproduced or copied in any form or by any means except with the written permission of RLSF.







CONTENTS

OVERVIEW	6
RLS Board	8
Secretariat	9
Advisory Committee	9
President's Report	10
 YEAR IN REVIEW	 12
Highlights	13
Global Survey Effort	14
Scoresby Shepherd Awards	16
On the Web	18
In the Field - Surveying the Frozen Continent	20
Around the Globe	22
 OUTCOMES	 24
Management & Scientific Outputs	25
 FINANCIAL STATEMENTS	 26
Financial Support	27
Financial Report	28
Balance Sheet	30
 THANK YOU	 32
Partners	34
Supporters	35
Volunteers	36



An underwater photograph of a coral reef. In the foreground, a large, intricate, golden-brown fan coral is prominent. To its right, there are green, feathery corals and some purple sponges. In the background, a scuba diver is visible, partially obscured by the blue water. The overall scene is vibrant and detailed, showcasing marine biodiversity.

PART 1

OVERVIEW

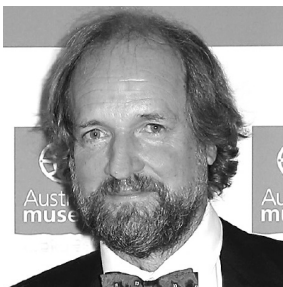
RLS BOARD



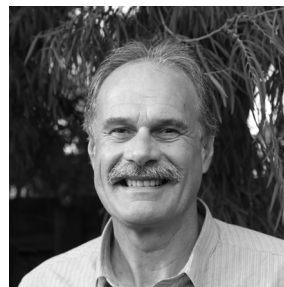
Rick Stuart-Smith
President



Meryl Larkin
Community Dive Representative



Graham Edgar
Executive Officer



Peter Mooney
Management Representative



SECRETARIAT

Antonia Cooper
Chief Operating Officer,
Treasurer

Lizzi Oh
Database Management

Lexi Lewis
Communications Officer

Margo Smith
Safety Officer

Joanna Schmid
Secretary

ADVISORY COMMITTEE

Steffan Howe
Parks Australia - Management

Antonia Cooper
IMAS - Science

Nathan Knott
NSW DPI - Management

David Logan
Parks Australia - Management

Rick Stuart-Smith
IMAS - Science

Alan Jordan
NESP Marine and Coastal
Hub

Tom Holmes
Parks WA - Management

Graham Edgar
IMAS - Science

Danny Brock
SA DEWNR - Management

Jordan Goetze
Parks WA - Management

Joanna Schmid
IMAS

Jamie Hicks
SA DEWNR - Management

Neville Barrett
IMAS - Science

Margo Smith
RLS diving community

Michael Sams
Parks VIC - Management

Amanda Richley
RLS diving community

Monique Bregman
Parks VIC - Management

John Turnbull
RLS diving community

Peter Mooney
Management

Andrew Green
RLS diving community

Paul Day
RLS diving community

PRESIDENT'S REPORT


In this year's RLSF Annual Report, we take a moment to reflect on the life of Scoresby Shepherd. While his passing is still raw for many in our community, we are incredibly proud that the Scoresby Shepherd Awards (page 22) ensure his contributions to RLS are remembered each year, as we recognise members for their own exceptional contributions. And when I think about the way this year's (and all previous) awardees go about their involvement in RLS, I find it quite special and fitting to think how much they would have impressed Scoresby.

This year's survey prize reflects the exciting global expansion of RLS that we highlighted in last year's annual report. Last year's survey prize was won for first time by international RLS diver - a feat backed up by another international RLS diver this year (with a staggering 96 surveys). And only once before in RLS's history have more countries been surveyed (collectively by all contributors to RLS) in a single year. See page 20 for the full stats on the impressive global survey effort we are proud to report on this year.

On a personal note, I am going to sneak in a quiet mention that I have recently stepped down from the RLSF Board, and this will be my last president's report. It is a sad moment, to be sure, but will give me more opportunity to concentrate on further expansion of RLS's international activities and general research partnerships and outcomes, while also making room for

the next generation of RLS leaders to step up. I will absolutely be remaining active in RLS and contributing all I can.

Moving forward, one of the key challenges I think RLS faces is working out what the 'right size' is, and how we can build on our collective achievements without losing sight of some of those things that make RLS so special and rewarding. A particularly important question to ask ourselves is 'how can we maintain the tight-knit community vibe and personal nature that has always been a characteristic of RLS'? I admit that this was initially a surprise to me (and I suspect Graham) when we ran our very first training expeditions at the start of 2008; trapping together a group of great people for a few days with a common goal and passion for marine life came with friendships and camaraderie that, at the time, I thought was such a bonus. Now I see it as an integral part of RLS rather than a bonus, and no doubt a key reason that many people continue to set aside their annual leave and weekends (or even ditch work!) to join RLS activities. Many of us might say we are here for the fish, or nod to the value of such an incredible database and network of divers, scientists and managers, making a real difference to the world's knowledge of reef life. But I suspect the friendships, collaborations, shared experiences and learning from others are



what keeps us so actively engaged for so long. We have dedicated people working to preserve these elements of RLS, and the team at RLS HQ really do welcome more ideas and assistance from members in continuing to enhance the RLS team spirit.

At the risk of sounding like I am leaving (I'm honestly not, just using this soapbox one last time!), I would like to thank those of you with whom I have shared such experiences. And from whom I have learned so much. As well as godfathers like Graham, Scoresby and Nev, this includes photography lessons with Andrew and Shawrie, sharing a laugh with Paul and Jamie at Kevin's and Danny's jokes, sharing life's lessons, falls and wins with field mums, sisters, dads and brothers like Margo, Mez, JT, Bill, Don, Sam, Min, Sue, Toni, Dinga, Jen and Yanir. There are too many names to list here of course, and I'm excited that there will be more in coming years.

Best fishes,

Rick Stuart-Smith



YEAR IN REVIEW

PART 2

2024/25 HIGHLIGHTS

GROWING OUR WESTERN AUSTRALIAN CHAPTER

This year's RLS training focused on growing the WA team, with five new divers trained by Meryl Larkin and Paul Day on Rottnest Island in May. It was a huge success, bringing fresh energy to the local team. This momentum carried on further up the coast at Ningaloo's annual survey expedition in August. With new additions to the team and great momentum across the state, we hope to see the WA team continue to grow and achieve their annual survey goals into the future.

GROWING INTEREST FROM PROSPECTIVE VOLUNTEERS

In the last financial year, RLS received an all time high of 60 expressions of interest from new divers keen to get involved with RLS. Many additional offers of support from data managers, web developers, boat owners, and skippers were also received, indicating an increase in our reach and public awareness of RLS.

RLS gives citizen scientists first-hand experience and fosters a better understanding of ongoing changes on the world's reefs. We're pleased to see that the public has a vested interest in getting involved with our survey efforts, now more than ever.

A GREAT YEAR FOR RESEARCH OUTPUTS

Publications in the last financial year included papers in high-profile journals like Proceedings of the National Academy of Sciences, a historic report on Lord Howe Island's shallow reefs drawing on 17 years of monitoring, and a report on the status and trends of coral reefs in the Pacific from 1980–2023 by the Global Coral Reef Monitoring Network and the International Coral Reef Initiative. These publications combine the work of RLS members, students, and third-party researchers using the RLS data. To read more, head to page 25.

2024-25 GLOBAL SURVEY



1251

SURVEYS
COMPLETED

561

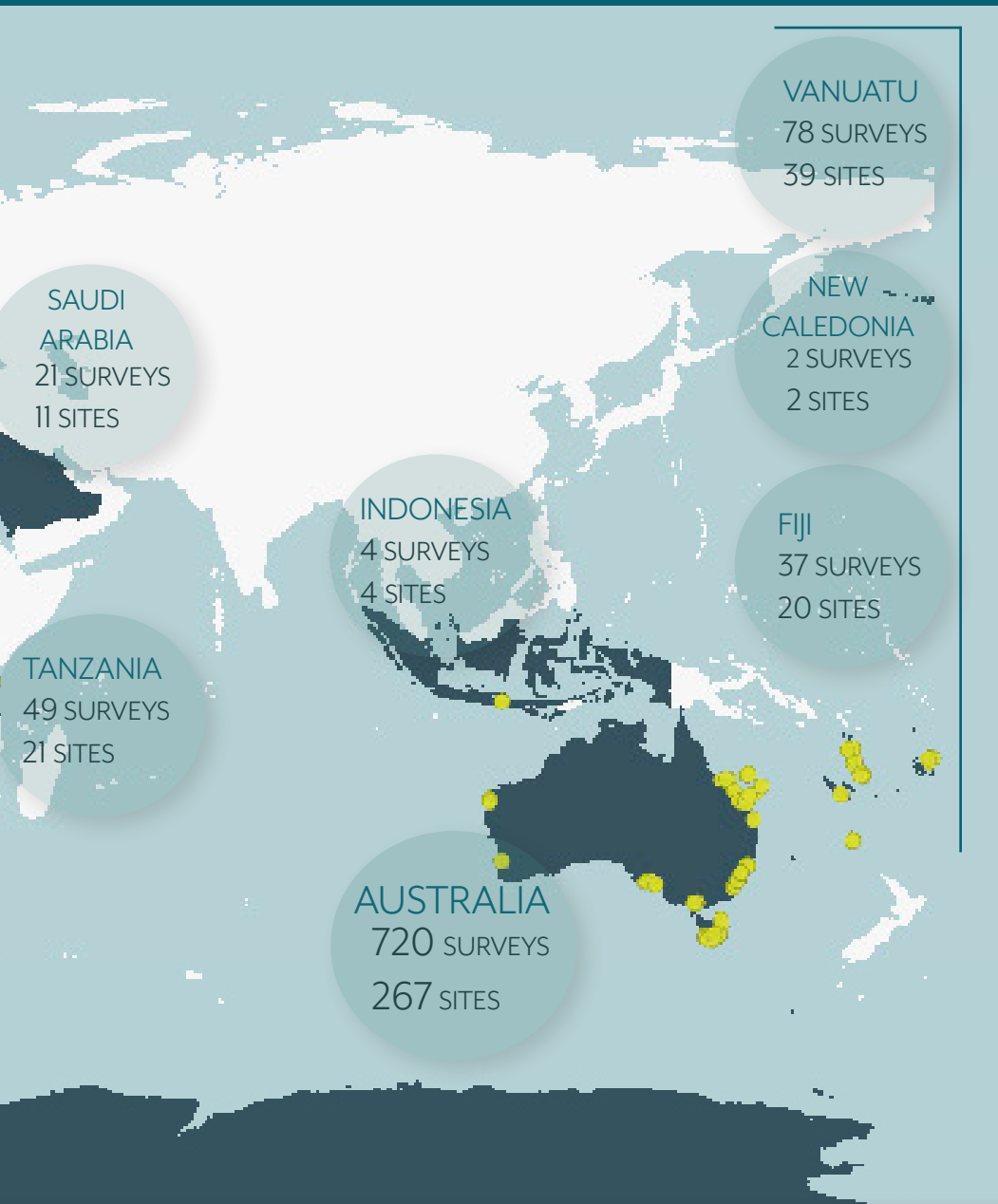


SITES SURVEYED

265

NEW SITES
SURVEYED

EFFORT



20

COUNTRIES SURVEYED

133

DIVERS INVOLVED

AUSTRALIAN SURVEY EFFORT

Queensland
134 SURVEYS
83 SITES

New South Wales
151 SURVEYS
57 SITES

Victoria
50 SURVEYS
13 SITES

Tasmania
341 SURVEYS
65 SITES

South Australia
27 SURVEYS
14 SITES

Western Australia
51 SURVEYS
25 SITES

Norfolk Island
66 SURVEYS
22 SITES

The Australian survey effort includes >200 surveys funded and conducted by collaborators from the University of Tasmania's Institute for Marine and Antarctic Studies. This includes programs such as the Australian Temperate Reef Collaboration.

THE SCORESBY SHEPHERD AWARDS

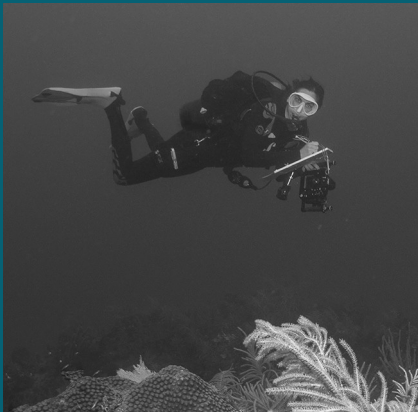
For outstanding voluntary
contributions to the Reef Life
Survey Foundation



IN HONOUR OF THE LIFE AND WORK OF DR SCORESBY SHEPHERD AO

Dr Shepherd was a remarkable marine scientist whose life's work helped shape the future of marine science in Australia. Dr Shepherd was not only a distinguished researcher and passionate advocate for our oceans, but also a qualified lawyer and an enduring force for conservation in South Australia and sustainable fisheries management worldwide. His influence extended far beyond academic contributions – he was instrumental in the establishment of the Reef Life Survey Foundation and served with great dedication on both the RLSF Board and Advisory Committee for many years. His wisdom, guidance, generous donations, and unwavering support were invaluable to our mission. More than a decade ago, the Scoresby Shepherd Awards were created – an initiative that honours and recognises the exceptional efforts of our volunteer divers each year.

We are deeply saddened by his passing, and are honoured that his legacy will live on through these awards and the continued work of those he inspired. Scoresby's lifelong dedication to marine science and his enduring support for citizen science will never be forgotten.



THE SURVEY PRIZE

For the RLS member who contributed to the greatest number of surveys during the year

Leah Harper

This year's Survey Prize is awarded to RLS Trainer Leah Harper from Reef Life Survey's US chapter, who contributed an epic tally of 96 surveys throughout the year across Panama, Brazil, the Dominican Republic, Saudi Arabia and the US.

Honourable mentions go to Tanja Ponudic and Joe Shields with 89 and 79 surveys respectively, and John Turnbull with 58 surveys. This has been a huge undertaking by all.



THE DISTINGUISHED CONTRIBUTION AWARD

For the RLS member who made the greatest voluntary contribution during the year by means other than surveys

Margo Smith

This year's Distinguished Contribution Award goes to Margo Smith. Among the first RLS divers to be trained, Margo has made enormous contributions to RLS operations over the last 17 years. These have ranged from coordination of surveys and teams on the NSW central coast right through to a role on the board for many years (during which time she was not eligible for a SAS award). She still sits on the RLSF advisory and safety committees, through which she played a key role in developing the safety manual.

Honourable mentions go to John Turnbull, Tom Davis, and Tess Hoinville for their contributions to survey coordination and training.

ON THE WEB

It's been another successful year for the RLS website and social media channels. It's been an absolute pleasure producing web products that help RLS divers and the general public keep track of what we're up to. Tracking the engagement of our audiences with our publications lets us know what works, what's interesting, and what isn't! Here's an overview of our year in media.

Our most engaging content for the last financial year fit into a few key categories:

1) Instagram rises to the top: we are seeing a general decrease in engagement from Facebook users, but a large uptick in Instagram reach (up 235% from the previous financial year).

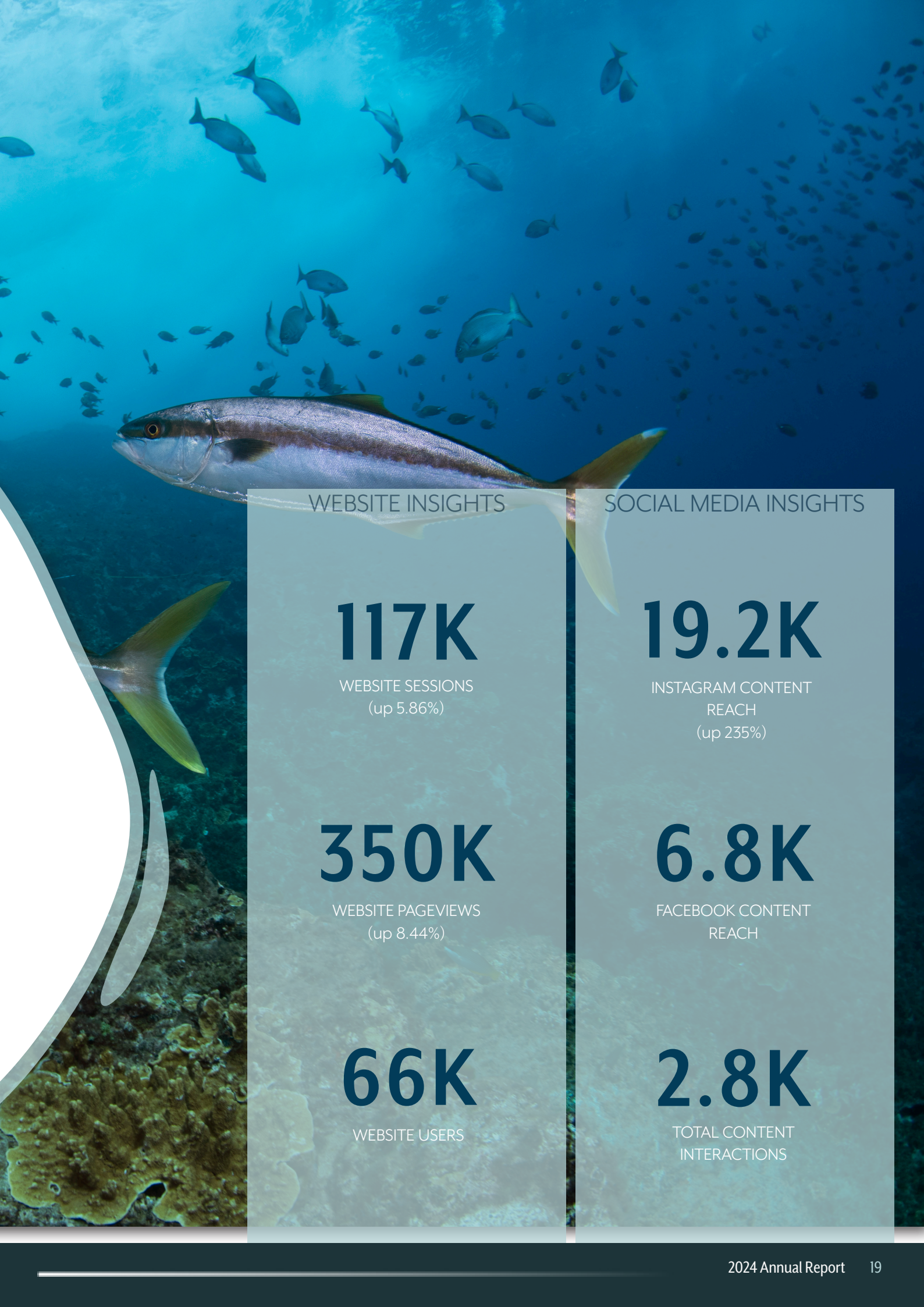
2) Video content: social media users were most likely to interact with reels, and indeed some of our top posts from the year were in video format.

3) Antarctic content: videos and multi-photo posts from Rick Stuart-Smith and Graham Edgar's momentous survey expedition to Antarctica smashed previous records out of the park, quickly becoming the most interacted with content we have ever posted. With over 10k views on a single video, the people have well and truly spoken.

4) Reef Species of the World: the RSoW continues to pull in website users, with 150k pageviews over the last financial year. The incredible usefulness of this resource as an online searchable fieldguide to any region or group of species you desire makes this a one-

stop shop for all marine users and fish enthusiasts alike. We continue to invest time to making this resource as complete and as useful as possible, so that you can keep using it for all your species ID needs.

Through time, we'll keep building and improving on these resources, and anticipate that our web users will continue to grow in turn. So don't forget to spread the word to all your fish-interested friends, foes, and colleagues!



WEBSITE INSIGHTS

117K

WEBSITE SESSIONS
(up 5.86%)

350K

WEBSITE PAGEVIEWS
(up 8.44%)

66K

WEBSITE USERS

SOCIAL MEDIA INSIGHTS

19.2K

INSTAGRAM CONTENT
REACH
(up 235%)

6.8K

FACEBOOK CONTENT
REACH

2.8K

TOTAL CONTENT
INTERACTIONS

IN THE FIELD

SURVEYING THE FROZEN CONTINENT

Early on in 2025, RLS Co-founders Rick Stuart-Smith and Graham Edgar, along with international colleague Ed Parnell had the immense privilege to resurvey the frozen continent. The team were headed to Antarctica, on a survey expedition facilitated by Aurora Expeditions and the University of Tasmania's Institute for Marine and Antarctic Studies.

Joining Aurora's tour boat to contribute to Aurora's excellent science enrichment program for cruise guests, Rick and Graham were able to conduct SCUBA surveys and report on the work of the RLSF to their fellow passengers throughout the trip. Although diving in the -1.5 degree water in restrictive dry suits was certainly a challenge, it was all worth it

for this other-worldly diving experience and the addition of valuable data to the global database.

Invertebrates were out in numbers, making up the bulk of the biomass on surveys. Fish were few and far between, but those that were recorded were particularly unique, having adapted antifreeze in their blood in order to survive their icy environment.

Isopods and pycnogonid sea spiders were colossal in size compared to the species seen back home in temperate Australia, and sea stars were particularly diverse. The shallow habitats surveyed were largely affected by ice scour and were dominated by red algae and coralline crusts, whereas deeper habitats

visited by the recreational divers on the trip featured many more sea sponges and anemones, as well as fish species that the RLS team had missed at their shallow sites.

All in all, this survey expedition was a success and a delight for all involved, and we are extremely grateful for the support of Aurora Expeditions and the University of Tasmania in facilitating this data collection effort.



AROUND THE GLOBE



While the 2024–25 financial year did not reach previous highs in total survey volume, it marked a significant milestone in the global reach of Reef Life Survey activities.

This year saw RLS data collection efforts span more countries than in any year since 2011–12, underscoring the program's growing international footprint. Surveys were conducted across a diverse array of regions, from tropical reefs to polar ecosystems—including a return to Antarctica, highlighting the versatility of the RLS method and the dedication of our global volunteer network.

Contributing greatly to this achievement, the recipient of this year's Survey Award, RLS Trainer Leah Harper, led surveys across Panama, Brazil, the Dominican Republic, Saudi Arabia and the US. Leah coordinated Reef Life Survey divers from across the

Smithsonian's MarineGEO network to resurvey established sites in Bocas del Toro Panama (July 2024) and Carrie Bow Cay Belize (Dec 2024). They also began a new collaborative project with the state of Florida's Fish and Wildlife Conservation Commission to survey 75 long-term benthic monitoring sites along the Florida Reef Tract from the Dry Tortugas to West Palm Beach, with the first year of surveys occurring between June 2024 and June 2025.

Leah and MarineGEO divers also travelled to Jeddah, Saudi Arabia to survey and train partners at KAUST in Jan 2025, and ran survey and training missions in Sao Sebastiao (Brazil, Feb 2025), Bayahibe (Dominican Republic, April 2025), and St Thomas (US Virgin Islands, April 2025) as part of a Paul Angell Family Foundation funded project to survey fish and mobile invertebrates across habitats

inside and outside of marine managed areas. This is the first time RLS data have been collected from Saudi Arabia, the Dominican Republic and US Virgin Islands - all in addition to the team's huge re-survey effort. Well done to Leah and the MarineGEO team!

This expanding international engagement demonstrates the increasing recognition of RLS as a vital contributor to global reef monitoring and biodiversity assessments. By targeting underrepresented and logistically challenging locations, RLS continues to enhance the spatial breadth of its long-term dataset, helping fill critical gaps in global reef health understanding. This approach continues to build the relevance and value of the data for marine conservation, not only in Australia but around the world.



GLOBAL INSIGHTS

20

COUNTRIES SURVEYED

531

INTERNATIONAL SURVEYS

294

INTERNATIONAL SITES SURVEYED

A full-page background image of an underwater scene. In the upper right, a scuba diver is visible, swimming horizontally. The foreground and middle ground are filled with a diverse coral reef, including large, rounded brain corals with green and brown polyps, and several tall, thin, feathery coral structures. The water is a clear, deep blue, and the lighting suggests sunlight filtering down from the surface.

PART 4

OUTCOMES

33

REPORTS & PUBLICATIONS
PRODUCED

MANAGEMENT & SCIENTIFIC OUTPUTS HIGHLIGHTS

Limited net poleward movement of reef species over a decade of climate extremes

Herrera Fuchs, Y., Edgar, G.J., et al. 2024

Nature Climate Change, vol. 14, <<https://www.doi.org/10.1038/s41558-024-02116-w>>

Sustainable-use marine protected areas to improve human nutrition

Viana, D.F., Gill, D., et al. 2024

Nature Communications, vol. 15, no. 7716, <<https://doi.org/10.1038/s41467-024-49830-9>>

Contrasting population trajectories of temperate reef fishes and invertebrates following seasonal and multi-decadal temperature change

Herrera Fuchs, Y., Edgar, G.J., et al. 2025

Global Change Biology, vol. 31, no. 5, <<https://doi.org/10.1111/gcb.70233>>

Coral responses to a catastrophic marine heatwave are decoupled from changes in total coral cover at a continental scale

Mellin, C., Stuart-Smith, R.D., et al. 2024

ProcB, vol. 291, no. 2032, <<https://doi.org/10.1098/rspb.2024.1538>>

Fish and invertebrate communities show greater day-night partitioning on tropical than temperate reefs

Jones, T.R., Edgar, G.J. et al. 2024

Ecology, vol. 106, no. 1, <<https://doi.org/10.1002/ecy.4477>>

Macroalgae and mobile reef invertebrates face high extinction risk

Johnson, O.J., Heather, F.J., et al. 2025

Biological Conservation, vol. 305, <<https://doi.org/10.1016/j.biocon.2025.111052>>

Status and Trends of Coral Reefs in the Pacific: 1980 - 2023

Wicquart J., Towle E. K., Dallison T., Staub F., and Planes S. (eds.), 2025

Global Coral Reef Monitoring Network (GCRMN) and International Coral Reef Initiative (ICRI), <<https://doi.org/10.59387/WIUIJ2936>>

Conserving the beauty of the world's reef fish assemblages

McLean, M., Mouillot, D., et al. 2025

PNAS, vol. 122, no. 25, <<https://doi.org/10.1073/pnas.2415931122>>

Consistent unimodal body length distributions in hundreds of reef fishes across diverse life histories

Heather, F.J., Richards, S.A., et al. 2025

Fish and Fisheries, vol. 26, no. 4, <<https://doi.org/10.1111/faf.12896>>

FINANCIALS

PART 4

STATEMENTS





FINANCIAL SUPPORT

Reef Life Survey would like to thank the following people for their financial support over the 2024/25 financial year.

COLLEEN MORRIS

Colleen has provided enormous voluntary support & much appreciated expertise to the financial record-keeping of the RLSF.

MICHAEL MULLER ACCOUNTING

Michael Muller and his staff, in particular Deanne, have generously supported the RLSF in the last financial year. Michael has continually supported the RLSF since the organisation's incorporation in 2011. RLSF sincerely thank Michael and staff for their invaluable accounting advice & quality auditing.

FINANCIAL REPORT

RLS INCORPORATED

The RLSF Incorporated account spends & receives grant funding and other income.

Budget Category	Subcategory	Amount
Income	Grants	\$23,345
	Donations	\$3,158
Total Income		\$26,503
	Subcategory	Amount
Expenditure	Accounting	\$1,750
	Award - SAS	\$750
	Boat Running Costs	\$161
	Consulting Fees	\$121,091
	Communications	\$14,603
	Depreciation Expense	\$2,770
	Field Expenses	\$34,155
	Fuel	\$109
	Insurance	\$1,006
	Materials and Equipment	\$15
	Postage and Freight	\$328
	Repair and Maintenance	\$3,970
	Travel and Accomodation	\$24,381
	Safety Equipment	\$1,170
	Sundry Expenses	\$460
	Yacht Running Costs	\$2,641
Total Expenditure		\$209,360
Net Income		-\$182,856*



MARINE PUBLIC FUND

The Marine Public Fund is the account through which donations to the RLSF are spent & received.

Budget Category	Subcategory	Amount
Income	Memberships	\$669
	Merchandise Sales	\$5
	Donations	\$1,225
Total Income		\$1,900
	Subcategory	Amount
Expenditure	Depreciation Expense	\$3,200
	Field Costs	\$46
	Sundry Expenses	\$64
Total Expenses		\$3,310
Net Income		-\$1,411*

* Negative income primarily relates to receiving funds from a large contract in the previous financial year, which were expended in this financial year

BALANCE SHEET

RLS INCORPORATED

	Subcategory	Amount
Assets	ANZ Foundation Account	\$265,721
	Petty Cash	\$29
	Boat	\$27,700
	Less Accumulated Depreciation	-\$9,630
Total Assets		\$283,820

	Subcategory	Amount
Liabilities	GST Liabilities	\$2,269
	Unexpended Income	\$119,079
Total Liabilities		\$121,348
Net Assets		\$162,472

	Subcategory	Amount
Equity	Retained Earnings	\$345,328
	Current Earnings	-\$182,856
Total Equity		\$162,472



MARINE PUBLIC FUND

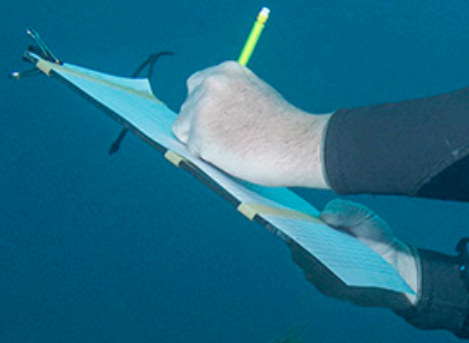
	Subcategory	Amount
Assets	ANZ Marine Public Fund Account	\$5,308
	Paypal Account (AUD)	\$12,838
	Paypal Account (USD)	\$42
	Boats & Trailer	\$32,000
	Less Accumulated Depreciation	-\$17,911
Total Assets		\$32,277

	Subcategory	Amount
Liabilities	GST Liabilities	-\$215
Total Liabilities		-\$215
Net Assets		\$32,492

	Subcategory	Amount
Equity	Retained Earnings	\$33,903
	Current Earnings	-\$1,411
Total Equity		\$32,492

PART 5

THANK YOU







PARTNERS &

Aquenal Pty. Ltd.

Australian Ocean Data Network (AODN)

Bigelow Laboratory for Ocean Sciences, USA

Department for Environment & Water, SA

Department of Biodiversity, Conservation & Attractions, WA

Handfish Conservation Project

Institute for Marine & Antarctic Studies (IMAS)

Integrated Marine Observing System (IMOS)

Minderoo Foundation

Montpellier University, France

Nord University, Norway

NSW Department of Primary Industries

Parks Australia

Parks Victoria

Port Phillip Bay Fund, Department of Environment, Land,

Rottneest Island Authority (RIA)

Smithsonian Marine Global Earth Observatory (MarineGEO)

Smithsonian Institute, USA

South African Institute for Aquatic Biodiversity (SAIAB)

The Ian Potter Foundation

University de Las Palmas de Gran Canaria, Spain

University of Maryland, USA

University of Tasmania, Australia

University of Victoria, Canada

Water & Planning, VIC



& SUPPORTERS

Amanda Bates, UVIC, Canada
Anthony Bernard, SAIAB
Aurora Expeditions
Combined Hunter Underwater Group
Colleen Morris
Dane Jones
David Foster
David Mouillot, University of Montpellier
Derek Shields
Deakin University
Dive Lord Howe
Em Lim, Canada
Emmett Duffy, MarineGEO, Smithsonian Institute, USA
Ella Clausius, RLS/IMAS
Environment Protection Authority, SA
Friends of Beware Reef
Glider Global
Green Adelaide
Jasmin Schuster, UVIC, Canada
Jemina Stuart-Smith, Handfish Conservation Project/ IMAS
John Anderson, Forte Web Design
Jon Lefcheck, University of Maryland, USA
Jose Sanabria Fernandez, Spain
Justin Hulls, IMAS

Kaylee Smit, SAIAB
Leah Harper, MarineGEO, USA
Lisandro Benedetti-Cecchi, University of Pisa, Italy
Lord Howe Island Marine Park
Mark Costello, Nord University, Norway
Matt McLean, University of North Carolina, USA
Michael Muller
Mikel Becerro, PNA-CSIC, Spain
Natali Lazzari, Spain
Nature Coast Marine Group
Nestor Bosch, University of Las Palmas de Gran Canaria
Paul Day, Carijoa Consulting
Sarah Gracie, UTAS
Solitary Islands Underwater Research Group
Tasmanian Divers Group
Tomas Bird, Canada
Underwater Explorers Club of Western Australia
Underwater Research Group of New South Wales
Underwater Sports Diving Centre
Uri Seroussi
Western Australian Divers for Diversity Inc.
Whitsunday Escape
Yanir Seroussi



VOLUNTEERS

Thank you to the following people for contributing data to the RLS database over the 2024/25 financial year:

Alejo Irigoyen
Alicia McArdle
Alicia Vollmer
Andrew Green
Antonia Cooper
Ashley Smith
Aviaja Bruce Nathansen
Bob Ellis
Carlota Barañano
Carolina García
Cass Nolan
Cathie Shorthouse
Cayne Layton
Chris Westley
Claudia Santori
Cyril Hautecoeur
Danja Currie-Olsen
Elouise Haskin
Elodie Camprasse

Emily Anderson
Felicia Aronson
Gary Summers
Gaston Trobbiani
Germán Soler
Graham Edgar
Jacqui Pocklington
Jared Oviatt
Jasmin Schuster
Joanna Schmid
Joe Shields
John Turnbull
Josh Moloney
Julie Jones
Katie Cummings
Kate Tinson
Kaylee Smit
Kevin Smith
Kirsty Whitman



Lara Denis-Roy
Leah Harper
Lexi Lewis
Lindsay Huebner
Liz Oh
Madeline Davey
Margo Smith
Marianne Pelletier
Marina Kouzmin
Matthew Doherty
Matt McLean
Meryl Larkin
Monique Bregman
Natalie Otte
Nicky Fillby
Nick Yee
Nicola Davis
Noam Altman-Kurosaki
Oceane Attlan

Oliver Jan Forsman
Ondine Pontier
Paul Day
Rachel Austin
Rick Stuart-Smith
Samantha Crisp
Sam Kruimink
Shamaram Eichmann
Shenae Willis
Simon Brooks
Stuart Laing
Sue Baker
Tanja Ponudic
Tess Hoinville
Tomas Bird
Tom Davis
Tony Xuereb
Ulysse Flandrin
Valesca de Groot

